

Insight

ARLINGTON HEIGHTS SCHOOL DISTRICT 25 NEWSLETTER

EMBRACING TODAY. INSPIRING TOMORROW.

BUILDING FOR THE FUTURE

A look at facility improvements
throughout District 25 – page 6





IN THIS ISSUE

- 3 Dr. Bein's Message
- 4 AHSD 25 News & Headlines
- 5 District 25 in the Community
- 6 Expansion Projects – Building for the Future
- 8 Learning for Tomorrow
- 10 Dollars & Sense – A Conversation with Stacey Mallek
- 11 D25 Staff Snapshot – “We Grew Up Like This”

CONNECT WITH US

WWW.SD25.ORG

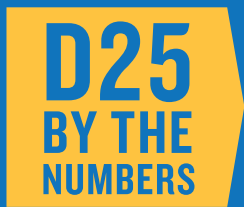


@AHSD25



FACEBOOK.COM/AHSD25

View our monthly administration podcast interviews at www.sd25.org/stories



2016 SIXTH DAY ENROLLMENT

5,524

20.48

K-5 STUDENTS
PER CLASS

9 SCHOOLS
IN THE DISTRICT

858 STAFF
MEMBERS

\$11,516 PER PUPIL
EXPENDITURE
(article on page 10)

5,398 2015 SIXTH DAY
ENROLLMENT



ARLINGTON HEIGHTS SCHOOL DISTRICT 25

is a proud member of the Arlington Heights community! We appreciate the partnerships we have with all of the Arlington Heights organizations and families. We recognize that these partnerships are vital in helping us provide a superior education for a lifetime of learning.

AHSD25 educates our early childhood through 8th grade students in nine schools throughout Arlington Heights. Over 5,500 students benefit from a rigorous and engaging curriculum taught by highly skilled and genuinely caring teachers.

We are proud of the achievements of our students and staff in AHSD25. The 2016-2017 school year opens with many new goals to support the excellent teaching and learning in our schools.

Having completed the expansion of Ivy Hill and Olive-Mary Stitt Elementary Schools, we will now begin the expansions of Windsor Elementary School and Thomas Middle School. Our student enrollment is growing and we are dedicated to providing our community with the learning spaces our students and teachers need.

We are fine-tuning our strategic plan for the future and will soon be able to share our goals for the next 5 years with all of our constituents. We will provide a dashboard view of our achievement of each goal so that everyone can easily see how we are doing. Visit www.sd25.org to follow our progress.

Safety is a high priority in AHSD25. This year, we will review the safety of our facilities and our procedures for all areas of our district. We will collaborate with our local police and fire departments to insure that our students and staff can continue to focus on learning and growing in a safe environment.

We continue to update all curricular areas and instructional methods. Our teachers are experts and their input leads us through the 21st century with a program that provides the best tools and learning strategies to help our students engage with core content and creative arts.

AHSD25 is dedicated to maintaining long-term financial stability. We have, in fact, received the state's highest financial rating for over a decade. Our Board of Education stays focused on decisions that positively impact learning while supporting the interest of our taxpayers.

Thank you for the support you've provided to Arlington Heights School District 25. Our students are benefiting from all aspects of the Arlington Heights community. We are honored to work with our community partners to help kids learn, grow, and lead.

Lori D. Bein, Ed.D. – *Superintendent*



STUDENTS PUT ON A TECH CONFERENCE FOR AH PARENTS

Over 100 District 25 students jumped at the opportunity to show off their technological strengths for the second annual *Teachnology Fair*. This evening, put on by the District 25 PTA and District 25 was held last spring at Thomas Middle School, and called for volunteer students to step up and prepare a 30-minute presentation on a technological program or skill that they are passionate about, and teach the community.

TRAVELING THE WORLD AND CREATING EXPERIENCES

Every year for at least the last 17 years, Thomas and South Middle Schools have participated in a cultural exchange experience with the Japanese Futabakai School, housed at the former Rand Junior High School. Separately, students have the opportunity to travel to Shitara, Japan and live with Japanese families to learn first hand about Japanese culture. D25 families host Japanese students, as well.

CONGRESSWOMAN BRINGS GOVERNMENT TO LIFE AT PATTON

Local Congresswoman Jan Schakowsky popped into Patton Elementary last spring to answer any questions students had during their *Branches of Government* unit of study. Students prepared many questions for Schakowsky, and learned from the Congresswoman's answers. Schakowsky even organized a mock debate for these fifth grade Panthers to conclude the visit.

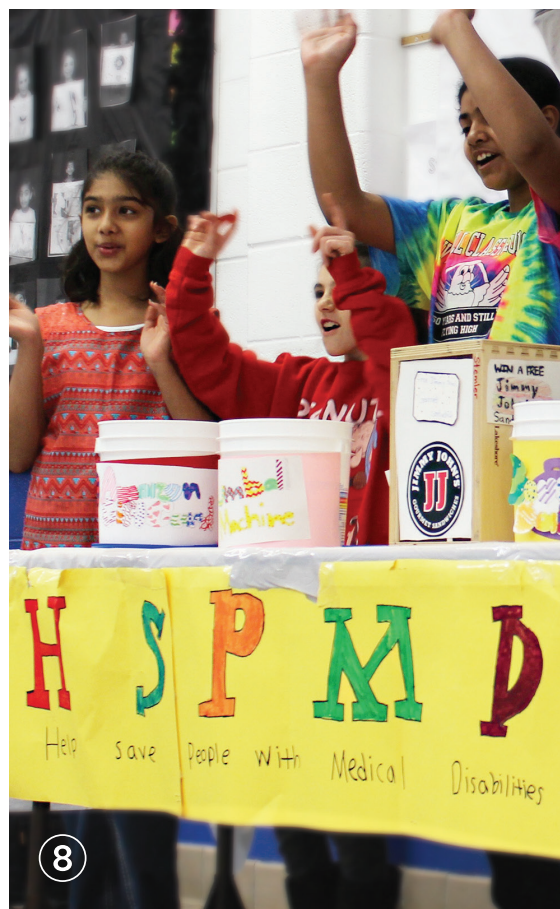
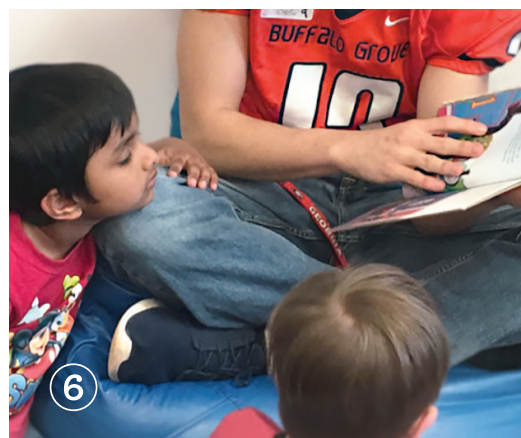
AUTHOR/ILLUSTRATOR VISITS, BRINGING HIS BOOK TO LIFE

Vamiclaw is a fictional character, created by the students at Olive-Mary Stitt Elementary, with help from Children's Author/Illustrator Ethan Long. Long taught students how to create without boundaries and let their ideas come to life during his visit to District 25.

FAMILIES & STUDENTS PROUDLY SHARE THEIR CULTURE

Families and students from Hungary, Japan, Poland, Israel, Russia, Pakistan, Venezuela, Greece and Norway put their culture on display at Greenbrier's Multicultural Fair last spring. This event gave students the platform to not only dress up in their culture's attire, and proudly tell family stories, but it also gave Greenbrier students the opportunity to learn about one another's background.

IMAGES FEATURED ABOVE: 1) Congresswoman Jan Schakowsky visits Patton Elementary. 2) A student exhibits his robot at the Teachnology Fair. 3) Middle School students participate in cultural exchange with students from the Japanese Futabakai School. 4) Author Ethan Long visits with students at Olive to discuss writing and illustrating.



STUDENTS CONSTRUCT OVER 130 BLANKETS TO DONATE

Olive and Westgate students and families participated in the *Project Linus* effort which collects donated blankets crafted by volunteers from all over the country, to deliver to children that are ill, traumatized or in need. Both communities got together to supply the materials and make the blankets, which were then donated to both Lurie Children's Hospital and Northwest Community Hospital.

DOWNTOWN BUSINESSES PARTICIPATE IN WORLD OF WORK

District 25 fifth graders get a chance to find out what it is like to work in a business for a day in a great partnership with the local businesses in downtown Arlington Heights. From bakeries to jewelers, and boutiques to restaurants, students were quickly trained and introduced to the work life by the owners and staff members of all of these downtown shops.

STUDENT CAMPAIGN GENERATES OVER \$1,400 IN DONATIONS

A 100% student run movement by a group of Ivy Hill fifth graders helped raise over \$1,400 in donations for Comer Children's Hospital in Chicago. Ten Ivy Eagle students named their campaign *Help Save People with Medical Disabilities (HSPMD)* and sold raffle tickets to win prizes. The idea for this campaign was part of a personalized learning effort where students are given the time and resources to research their own interests.

TMS CHOIR AND JAZZ BAND PERFORM AT LUTHER VILLAGE

While many residents of Arlington Heights' Luther Village ate and visited with their families, the Thomas Middle School choir and jazz band rocked out with songs such as *On Top of the World* and the crowd favorite and familiar *Pennsylvania 6-5000*.

DAYLONG READ-A-THON ENGAGES AH COMMUNITY

District 25 students invited District 214 students, the AH Fire and Police Departments, and each other to a day of celebrating reading. The community met at Greenbrier and read to one another. Kindergartners read to older students and the reverse. Books were then donated to the organization Open Books.

IMAGES FEATURED ABOVE: 5) A father and son work together to create a blanket for Project Linus. 6) A District 214 high school student engages a group of students during the daylong Read-A-Thon. 7) The Thomas Middle School choir and jazz band perform at Luther Village. 8) Students raise money to Help Save People with Medical Disabilities.

BUILDING FOR THE FUTURE

D25 is expanding with a purpose.

District 25 is growing! In fact, student enrollment has increased by over 1,000 students since the 1995-1996 school year. That's an addition of 45 classrooms throughout our nine schools, which averages out to five classrooms per building. Of course, each school's community is growing at various rates, so we studied our enrollment, developed projections and now are expanding the schools most in need. The first schools up were Ivy Hill and Olive-Mary Stitt Elementary Schools. Those projects broke ground last October (2015) and were completed on time, ready to welcome students for the 2016-2017 school year.

"I couldn't be happier with the results of the Ivy Hill and Olive-Mary Stitt expansion projects. We were able to meet the enrollment needs for these schools in a budget conscious manner that allowed school to remain open during construction and start on time for the 2016-2017 school year. These additions will serve the Arlington Heights community for many years into the future." – Director of Facilities Ryan Schulz

IMAGES FEATURED AT RIGHT: 1) A view of the new outdoor playground at Ivy Hill. 2) A class of students gather for P.E. in the new gym at Olive-Mary Stitt.



OLIVE-MARY STITT ELEMENTARY SCHOOL

5 NEW CLASSROOMS

**EXPANDED
COMMONS**
1,921 sq.ft.

**NEW
GYM**
6,000 sq.ft.

2 NEW OUTDOOR PLAYGROUNDS

471 2005-06 STUDENT
ENROLLMENT

587 2016-17 STUDENT
ENROLLMENT

IVY HILL ELEMENTARY SCHOOL

10 NEW CLASSROOMS

**EXPANDED
COMMONS**
2,488 sq.ft.

**NEW
GYM**
6,000 sq.ft.

NEW OUTDOOR PLAYGROUND

NEWLY EXPANDED BUS LANE

371 2005-06 STUDENT
ENROLLMENT

596 2016-17 STUDENT
ENROLLMENT

Next up are Thomas Middle School and Windsor Elementary School. The progress of each of these projects is at different points, however each school's expansion is expected to be done by opening day for the 2017-2018 school year.

Bids were received on the Thomas project and brought to the board at the October 20th board meeting. The lowest responsible bidder was selected. The hope is to break ground on Thomas's expansion this fall.

The Windsor detailed designs are being finalized. Once those are ready, the designs will be sent out to bid. The plan is to break ground this winter.

THOMAS MIDDLE SCHOOL

5 NEW CLASSROOMS

**EXPANDED
COMMONS** **NEW
GYM**

**NEW MUSIC CLASSROOM
& BAND ROOM**

845 2005-06 STUDENT
ENROLLMENT

957 2016-17 STUDENT
ENROLLMENT

WINDSOR ELEMENTARY SCHOOL

6 NEW CLASSROOMS

**EXPANDED GYM
AND COMMONS**

NEW OFFICES
CLASSROOM & MEETING SPACES

426 2013-14 STUDENT
ENROLLMENT

509 2016-17 STUDENT
ENROLLMENT



FOLLOW OUR DEPARTMENT OF STUDENT LEARNING ON TWITTER AT [#d25learns](#)

LEARNING FOR TOMORROW

Learning in the 21st Century is about moving from the information age to the innovation age

Every day District 25's teachers, administrators and staff members walk into their respective schools with the goal of preparing our students to become lifelong learners. Our Department of Student Learning believes in 21st Century education where it has become not only what a student knows, but also more importantly what a student can do with what he/she knows.

"Being a learner of only information isn't as important anymore," Assistant Superintendent of Student Learning Dr. Eric Olson said. "Employers are looking for those that have a desire to solve problems and we hope to develop skills within our students early on to think in a collaborative, creative and outside the box way when learning in the classroom."

One of the ways District 25 forges into the innovation age is through the

personalized learning model of education. Information is literally at our students' fingertips, every minute of every day, therefore there is less emphasis on the memorization of dates, people and historical events.

"Personalized learning helps prepare our students for jobs that don't yet exist," Dr. Olson said. "In this 21st century educational mindset, we are also teaching the students how to learn where the 20th century model focused heavily on what to learn."

Students in District 25 are often given the support to develop theories, beliefs, ideas and even their own interests when learning about a particular subject or topic, and then they are encouraged to research and expand to provide support. This is done through group projects, discussions, reflection work, solo projects, and

more, all led and facilitated by our dedicated, enthusiastic and highly trained teachers.

OK....SO HOW IS THAT "LEARNING FOR TOMORROW?"

As the world continues to change, we want to foster an environment where our students can learn to change with it. The way students learn is ever adapting, which changes the way we currently teach and will teach in the future. Our goal is to develop our students' learning skills such as their ability to collaborate, problem solve, think creatively and innovate so that tomorrow becomes familiar to our students, today.

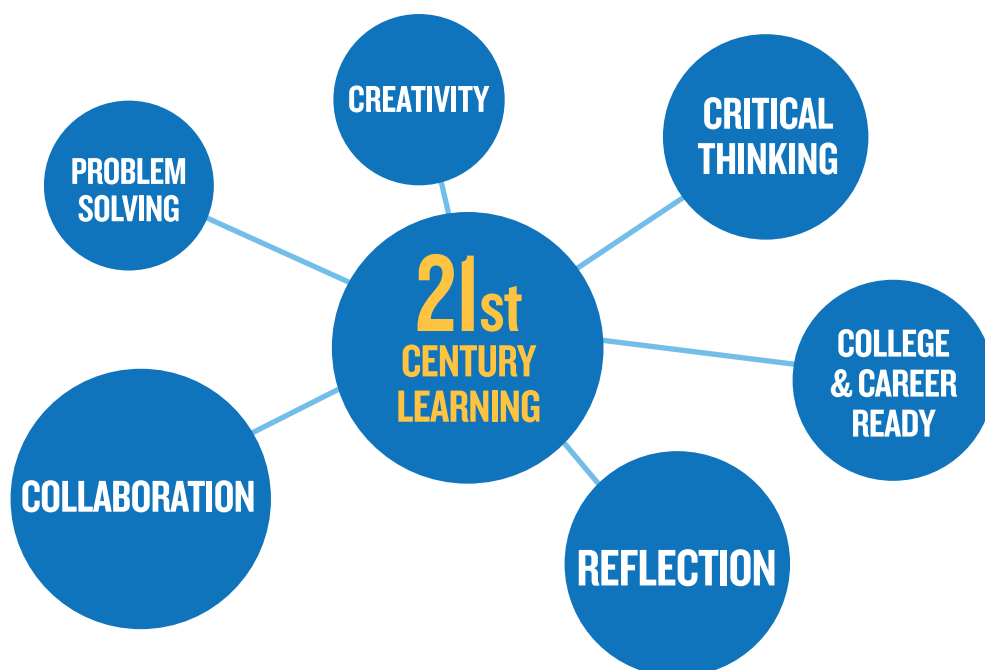
"Eventually, we would love for our students to see how the world works, and think, 'how can it be better?'" Dr. Olson said.

20th CENTURY THE INFORMATION AGE

Student success equaled knowledge of dates, facts, events, etc.

21st CENTURY THE INNOVATION AGE

Student success not only equals knowledge learned but it also equals how students take information and use it to problem solve, collaborate and reflect on how to improve the world around us.



DOLLARS & SENSE

Where does your money go?

Stacey Mallek is a native of Arlington Heights. She grew up here, attended Patton Elementary and then ventured to Thomas Middle School. After four years at DePaul Stacey received her bachelor's degree in accounting. She went on to get her masters in educational administration with a Chief School Business Official (CSBO) endorsement from Northern Illinois University. Fast forward 10 years, Stacey came full circle, back to District 25, and she has the large responsibility of balancing taxpayer money with providing the best learning environment possible.

She gave me some time to better understand how she keeps District 25 a financially responsible and forward-thinking district. Here is our conversation.

Me (Adam Harris, Communications Coordinator): Hi Stacey! Thanks for giving me some time.

Mrs. Mallek: You're welcome. I'm excited to share what we do here in the business office.

Me: All right! Let's get to it. What is your role as the leader of the business office for District 25?

Mrs. Mallek: My role is to help make decisions that are best for our kids and of benefit to our kids while balancing the impact instructional decisions have on our budget. I am the steward of taxpayer money and I take that seriously.

Me: How do you keep that balance between what's best for our kids and what's best for the taxpayer?

Mrs. Mallek: I consider every decision through a financial lens. I recognize our budget is not a never-ending source of funds. I look at our District's expenditures the same way I would look at personal expenditures out of my own money. I often ask my colleagues if this were our own money, would we be comfortable spending it on this? My mom is a taxpayer in this District. Believe me, I hear it from her if a decision we make affects her taxes.

When making financial decisions, we look at if we can afford it today and

what the impact will be on our reserves five years out.

Me: You must have to say 'no' a lot...do you look at education as a business?

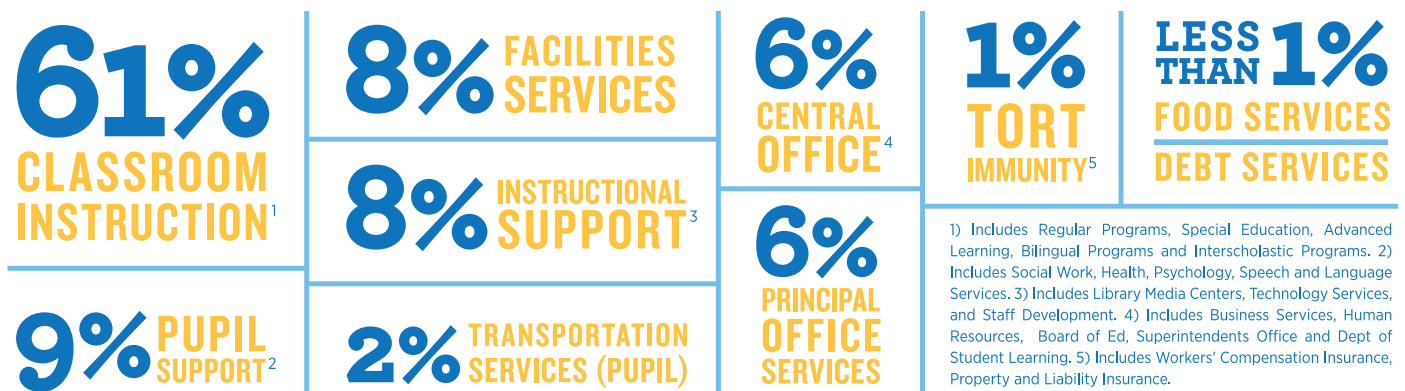
Mrs. Mallek: I don't think you can run education purely like a business. That being said, I think that when it comes to spending money, it is similar to business in that you want return on investment; except in our case, it is the kids and tax payers who directly benefit. Rather than say 'no', I consider whether we can make something possible through the reallocation of resources.

Me: You've been in this District for 10 years and this is only your third stop professionally. Why did you decide to work here and why have you stayed?

Mrs. Mallek: That's easy. I was born and raised here and I feel that I have the same values as the community. I feel like District 25 is my home.



HOW DISTRICT 25 SPENDS \$11,516 PER STUDENT (PER CAPITA TUITION COST)



1) Includes Regular Programs, Special Education, Advanced Learning, Bilingual Programs and Interscholastic Programs. 2) Includes Social Work, Health, Psychology, Speech and Language Services. 3) Includes Library Media Centers, Technology Services, and Staff Development. 4) Includes Business Services, Human Resources, Board of Ed, Superintendents Office and Dept of Student Learning. 5) Includes Workers' Compensation Insurance, Property and Liability Insurance.

WE GREW UP LIKE THIS!

Arlington Heights is in our roots.

We feel so grateful every day that we serve and contribute to Arlington Heights and its residents. District 25 has such a strong tie to this community through our partnerships with the Arlington Heights Village, Library, Chamber of Commerce, and Park District.

Our tie to Arlington Heights and its residents extends through our staff as well. Many of us live in or have lived in Arlington Heights.

We polled our staff to see how deep our roots extend. See the results to the right.

D25 STAFF BY THE NUMBERS

11.2%
I WAS BORN IN
ARLINGTON HEIGHTS

23.4%
I HAVE LIVED IN
ARLINGTON HEIGHTS
AT ONE POINT IN MY LIFE

10.3%
I ATTENDED A
DISTRICT 25
SCHOOL GROWING UP

41.8%
I CURRENTLY LIVE IN
ARLINGTON HEIGHTS

WHY WORK IN ARLINGTON HEIGHTS?

As a naive teenager, I thought Arlington Heights would be the last place I would land. My mother and father came here from the south side of Chicago in 1967. As an adult I moved back to the neighborhood I grew up in, and couldn't be happier. I have had this same conversation with so many people for 20 years or more. It is a great place to raise your family. It is a great place to live.

– Theresa Loacker, Special Education Teaching Assistant – Greenbrier Elementary School

While I didn't grow up in Arlington Heights, nor did I attend District 25 schools, and while I don't currently live in Arlington Heights, I did attend Hersey High School with District 25 kids and that experience with them is part of the reason I knew that I wanted to work in District 25.

– Katie Biewer, Social Studies – Thomas Middle School



IMAGE FEATURED AT LEFT: 1) Katie Biewer leads a discussion with a group of Thomas students.



ARLINGTON HEIGHTS SCHOOL DISTRICT 25

1200 South Dunton Avenue Arlington Heights, IL 60005

Non-Profit Org.
U.S. Postage
PAID
Plum Grove

2160 Stonington Ave.
Hoffman Estates, IL 60169

ADMINISTRATION

Dr. Lori Bein
Superintendent

Jake Chung
*Asst. Superintendent for
Personnel & Planning*

Chris Fahnoe
Director of Technology

Adam Harris
*Communications
Coordinator*

Coletta Hines-Newell
Director of Food Services

Aimee LeBlanc
*Asst. Superintendent for
Student Services*

Stacey Mallek
*Asst. Superintendent for
Business / CSBO*

Dr. Eric Olson
*Asst. Superintendent for
Student Learning*

Ryan Schulz
*Director of Facilities
Management*

SCHOOL BOARD

David Page
President

Brian Cerniglia
Vice President

Erin Johannesen
Secretary

Diana Chrissis
Member

Denise Glasgow
Member

Rich Olejniczak
Member

Charles W. Williams
Member

WE ARE HIRING!
**SUBSTITUTE
TEACHERS**

\$105 PER DAY

FLEXIBLE SCHEDULE

Select the days you want to work
based on your schedule.

CONTACT KASIA KOSINSKA

847-758-4912 or kkosinska@sd25.org

